



English User Manual

Copyright © (1990-2022) SW-Tools ApS
Duevej 23
DK-2680 Solrød Strand
Denmark
Phone: +45) 33 33 05 56
Mail: swtools@swtools.com
www: www.swtools.com

Setup Wizard - MBS Axapta

22/11/01 / 2022-09-01 008.384

Contents

Contents	2
1. The Setup Wizard	3
2. Step 1 - Interface	4
2.1. Requirements	5
3. Step 2 - Connecting to Axapta.....	6
3.1. Identification	7
3.2. Username	8
3.3. Password	9
3.4. Configuration	10
3.5. SW-Tools Server connection.....	11
3.5.1. Server interface	12
3.6. File id	13
3.7. Database relations	14
4. Step 3 - Company selection	15
5. Step 3 - Data Dictionary	16
6. Finished.....	17
Figure list.....	18
Index.....	19

1. The Setup Wizard

The Setup Wizard provides an easy way to setup the components required for working with SW-Tools TRIO for reports, queries and data entry and for SW-Tools ODBC driver.

The wizard will guide you through the following:

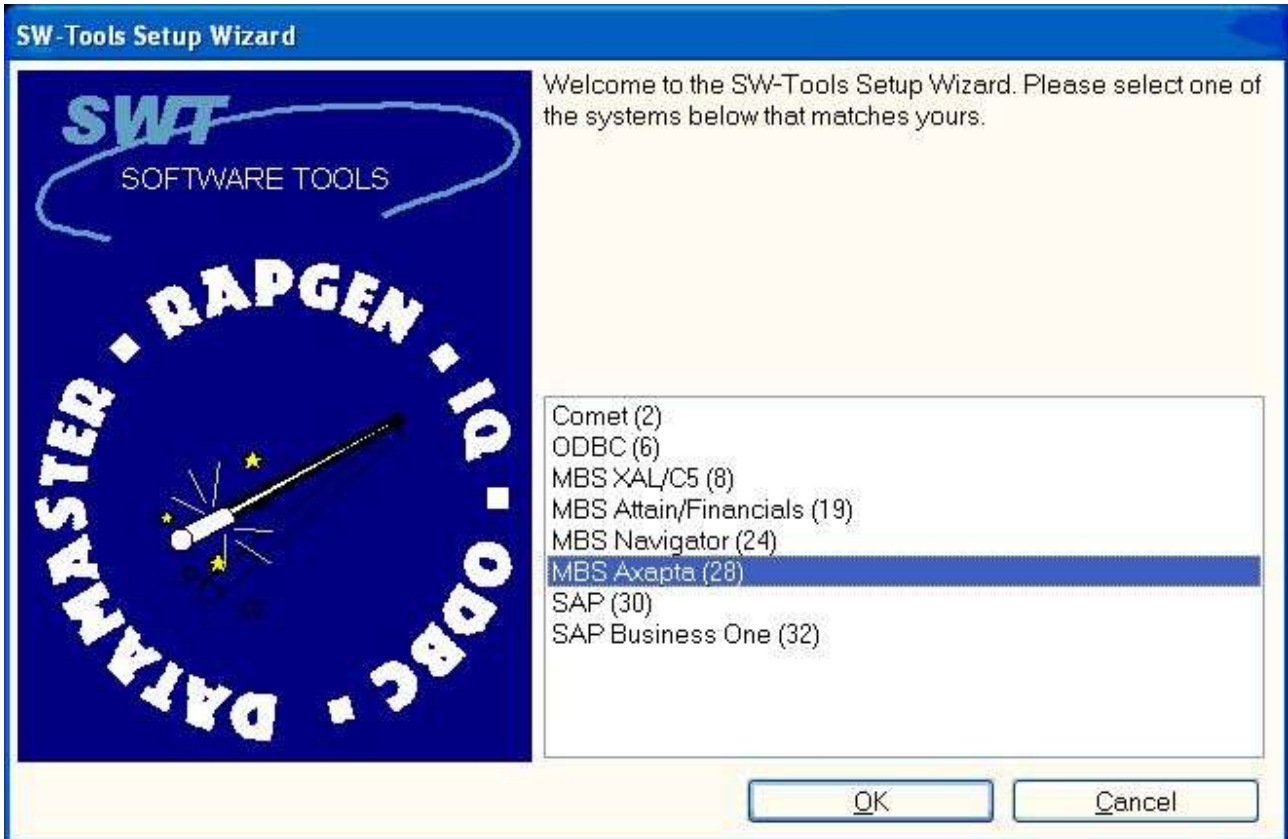
- **Selecting an interface (Required)**
- **Checking that required components such as Windows DLL's is present (Automatic)**
- **Setup of the interface fields (Required)**
- **Location of the sub system (Required)**

If you require to amend an interface setup by this Wizard please refer to the 'Data-Dictionary' manual.

2. Step 1 - Interface

When the Setup Wizard is started you are required to select an interface. Normally you will only have one but several may be listed according to the interfaces known to the SW-Tools products.

You need to select the following interface as shown in this figure:



1. Selecting the MBS Axapta interface

2.1. Requirements

There are some requirements which must be present in order for the SW-Tools products to access Axapta.

- **The Axapta license MUST include at least 1 Business Connector (COM Client) license**
- **The Axapta COM connector must be registered (use the Axapta Configuration utility)**

How to handle these steps, please refer to your Axapta documentation.

3. Step 2 - Connecting to Axapta

This chapter describes how to enter the fields required to setup access to MBS Axapta.

SW-Tools Setup Wizard - MBS Axapta

SWT
SOFTWARE TOOLS

TRI & DBC

MBS Axapta

To connect to Axapta the Axapta COM Connector MUST be registered. Enter the required fields before the Wizard can setup TRIO.

Name: SWAX

Description: MBS Axapta

User name: admin

Password: ■■■■■■

Configuration:

SW-Tools Server:

File ID: Default

Database relations

Back Next Cancel

2. Setup access to Axapta dialog

The Wizard will use a name and description to identify the setup. If any changes/extensions are made to your MBS Axapta database table/field definitions you have to go through the setup wizard again to update your TRIO dictionary.

3.1. Identification

The field **Name** and **Description** is by the Wizard to name the interface, subsystem and ODBC datasources with. A name is generated according to these rules:

Interface = <name>

Subsystem = <description> <name> (<company>)

System DSN = <name><company>s

User DSN = <name><company>u

File DSN = <name><company>f

The length of name is limited to 6 characters and the description to 64.

3.2. Username

Enter the username that you use when logging in. This is the Axapta user id.

3.3. Password

Enter the password for the user.

3.4. Configuration

Enter the Axapta configuration name. If left blank the current active configuration is used. If you use a configuration file for all your client you may specify the full path and filename of the configuration.

3.5. SW-Tools Server connection

With this feature you will have the following advantages:

- **The ODBC datasource fro SQL Server/Oracle is only required to be setup and licensed on the server**
- **SW-Tools IQ superindex search is optimal**

In order to use this facility you must install the SW-Tools Windows Server on the server where the MBS Axapta database is located.

On that same server the Axapta Client must be installed and licensed, and an interface prepared using the **SW-Tools Setup Wizard - MBS Axapta**.

If you use the server connection you will NOT need step 3.

3.5.1. Server interface

When you from the client make access to the SW-Tools Server you will only be able to select one of the interfaces setup on the server using the **SW-Tools Setup Wizard - MBS Axapta**.

3.6. File id

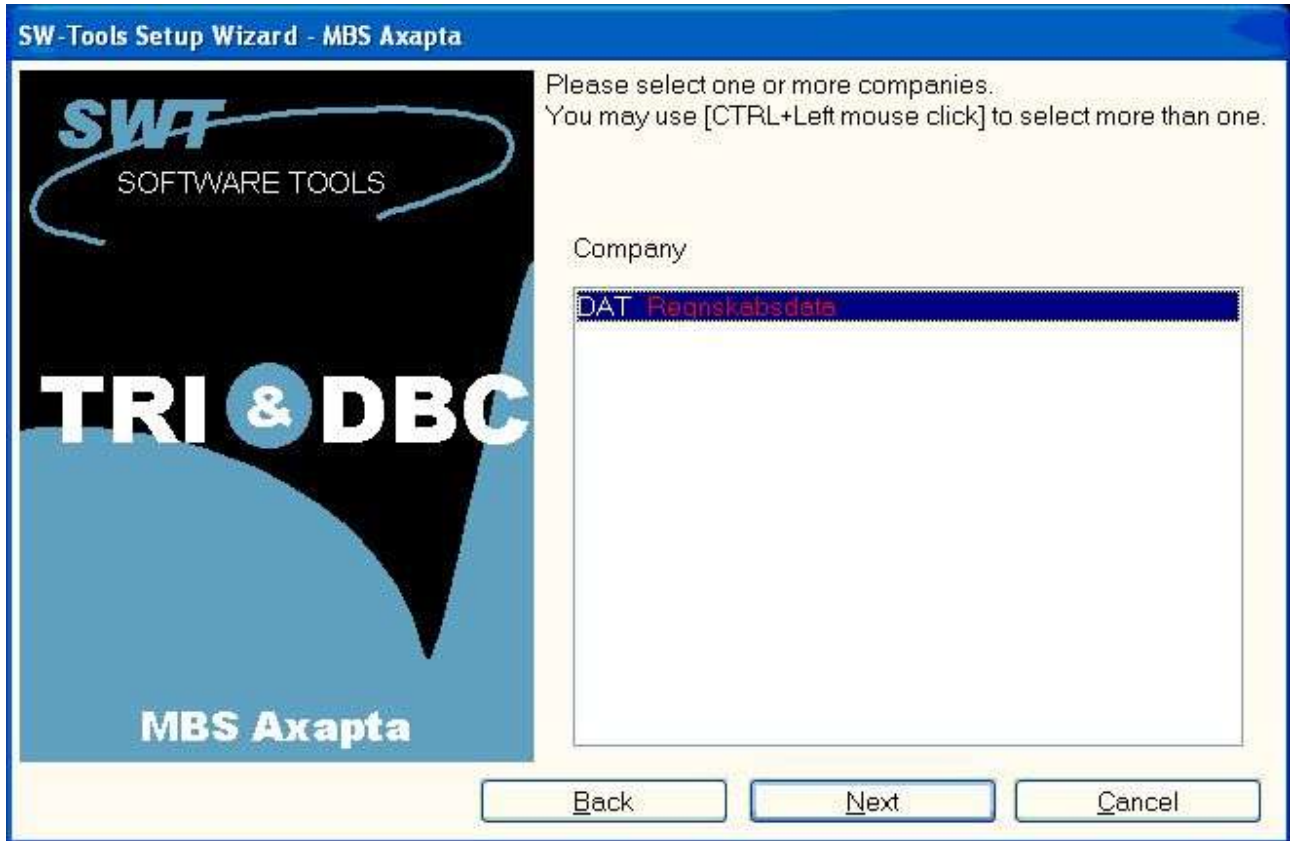
Normally the Setup Wizard will generate a file id for all tables automatically according to the uppercase part of the unique axapta tablename plus some additional character to make it unique, e.g. 'CustTable' becomes 'cty'. You may also generate the id according to the table number or tablename defined in axapta.

3.7. Database relations

If you checkmark this option the wizard will automatically locate relations between tables in the Axapta system. On a standard Axapta 3.0 installation this will result in appr.x. 50.000 relations. Because of this you should expect a duration of half an hour before completion.

4. Step 3 - Company selection

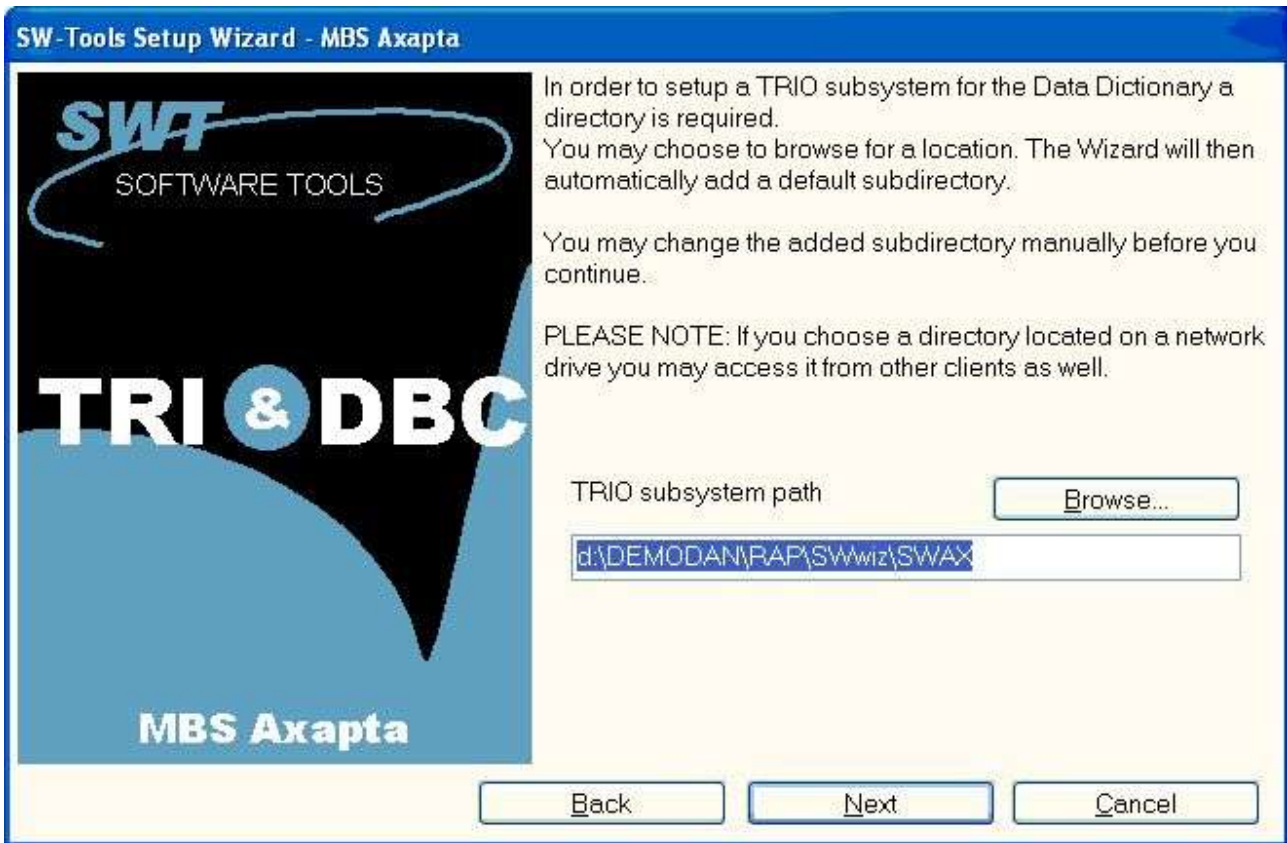
TRIO may work with any company located in the Axapta system. You may select one or more from the listing shown here:



3. Selecting companies

If you select more than one a subsystem will be generated for each selected company.

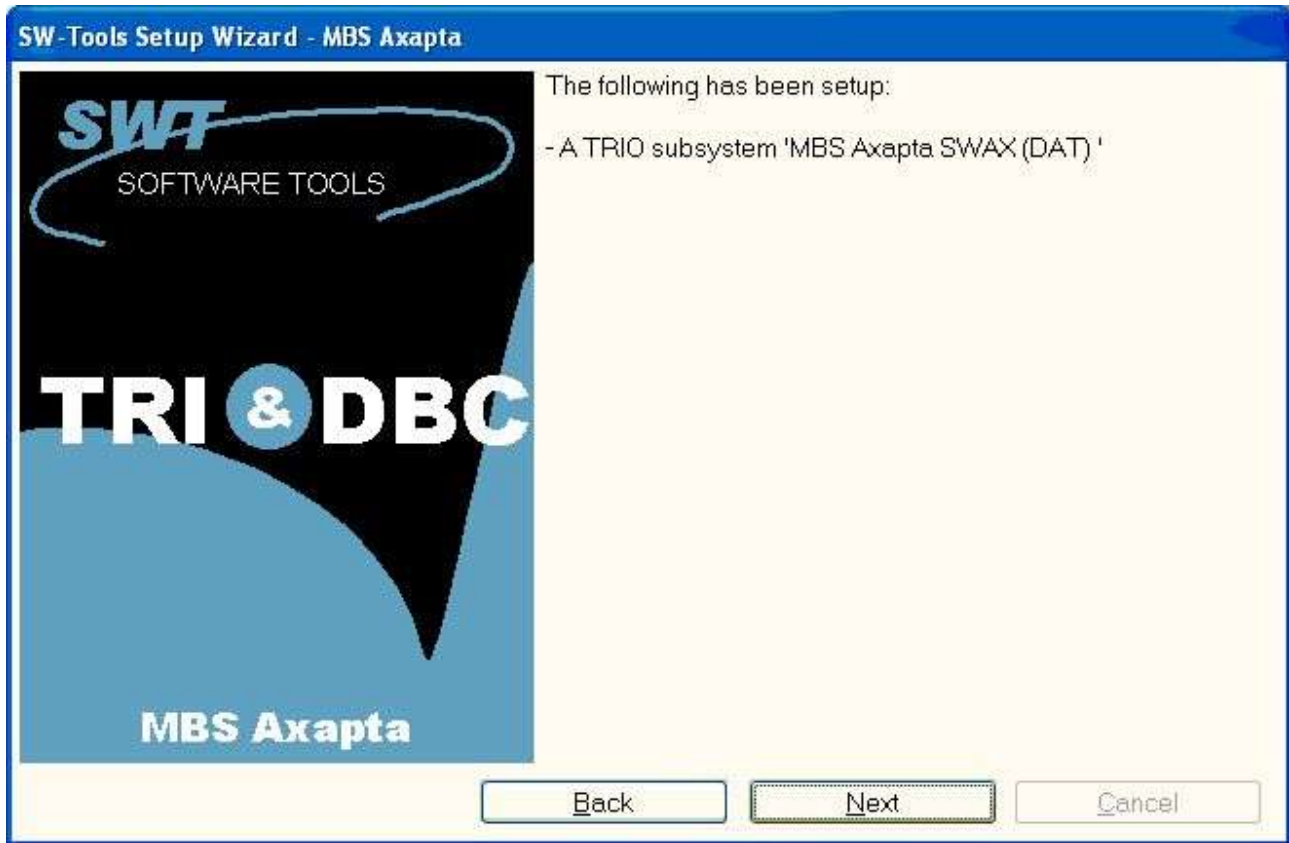
5. Step 3 - Data Dictionary



4. TRIO subsystem path

6. Finished

When the wizard has completed it will list what has been setup:



5. What has been setup

You may now work with SW-Tools TRIO and ODBC.

Figure list

1. Selecting the MBS Axapta interface	4
2. Setup access to Axapta dialog	6
3. Selecting companies	15
4. TRIO subsystem path	16
5. What has been setup	17

Index

A

Axapta 1;4;5;6;8;10;11;12;14;15;18

C

Client..... 5;11

COM 5

Company.....15

Configuration 5;10

Connector..... 5

CustTable13

D

Database.....14

Data-Dictionary 3

DSN..... 7

I

IQ11

M

MBS..... 1;4;6;11;12;18

O

ODBC.....3;7;11;17

Oracle 11

P

Password..... 9

R

Requirements..... 5

S

Server.....11;12

Setup..... 1;3;4;6;11;12;13;18

SQL 11

Subsystem 7

T

TRIO 3;6;15;16;17;18

U

Username..... 8

W

Wizard 1;3;4;6;7;11;12;13